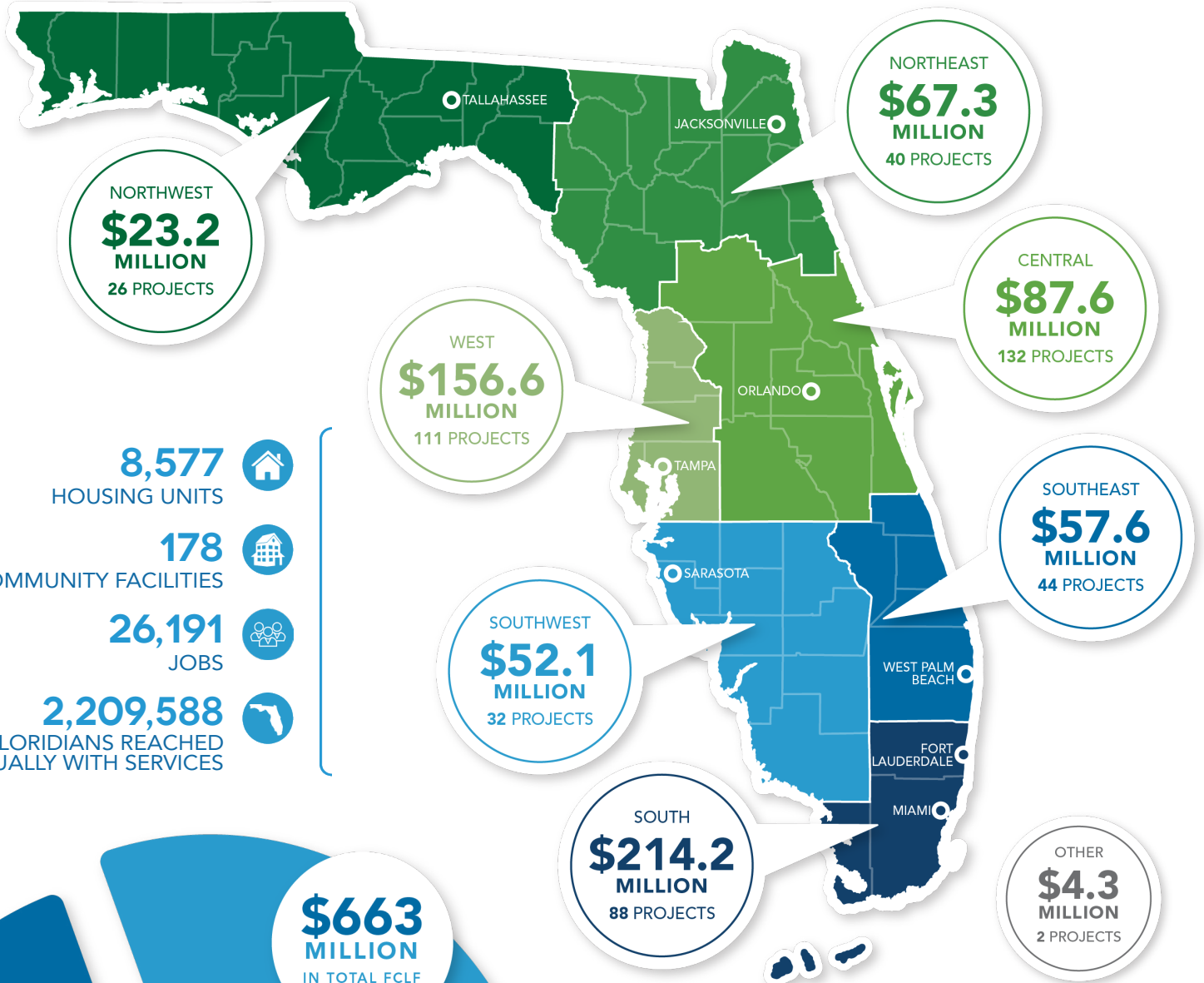
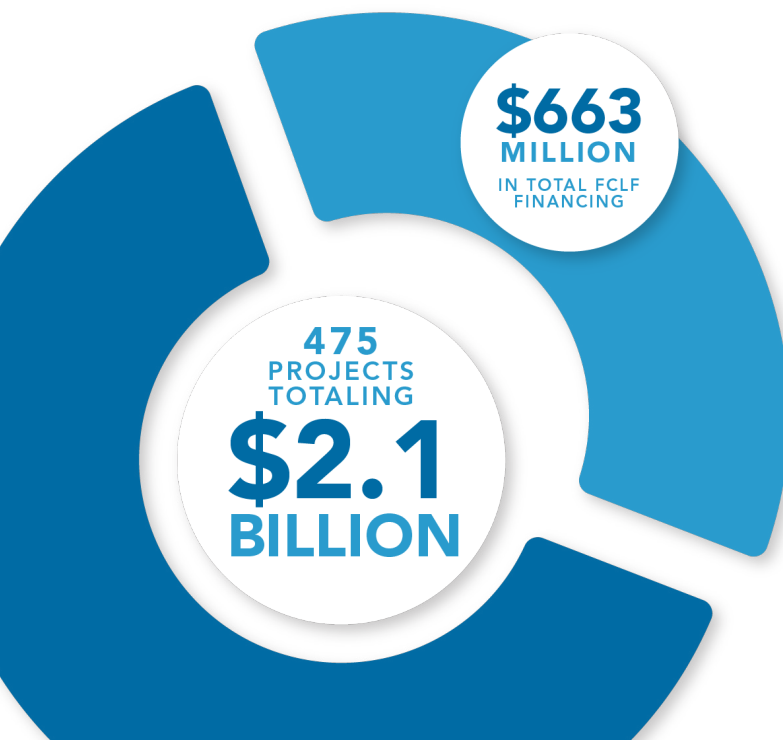


OUR IMPACT

12/31/2023



- 8,577 HOUSING UNITS
- 178 COMMUNITY FACILITIES
- 26,191 JOBS
- 2,209,588 FLORIDIANS REACHED ANNUALLY WITH SERVICES



TOTAL IMPACT

\$287,191,705	CDFI Lending
<u>\$375,563,181</u>	New Markets Tax Credit Financing
\$662,754,886	Total Cumulative FCLF
<u>\$1,432,596,406</u>	Other Funding Sources
\$2,095,351,292	FCLF Total Impact

HOW WE IMPACT LIVES

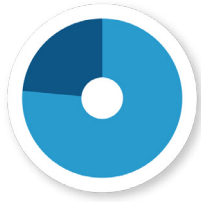


8,577 HOUSING UNITS



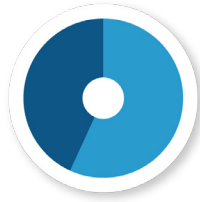
Housing Types

- Single Family (2,261)
- Multifamily (4,649)
- Supportive & Special Needs (1,667)



Own vs Rent

- Ownership (1,794)
- Rental (6,783)



New vs Rehab

- New Construction (4,478)
- Rehab (4,099)



178 FACILITIES

TOTALING 3 MILLION SQ. FT



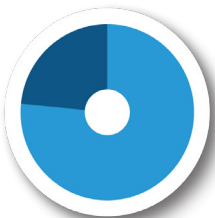
Facility Type

- Homeless & Special Needs (65)
- Education & Youth (30)
- Healthcare & Behavioral Healthcare (30)
- Commercial & Retail (23)
- Nonprofit Community Services (15)
- Food Access (15)



26,191 JOBS

CREATED OR RETAINED
AT PROJECTS FINANCED BY FCLF

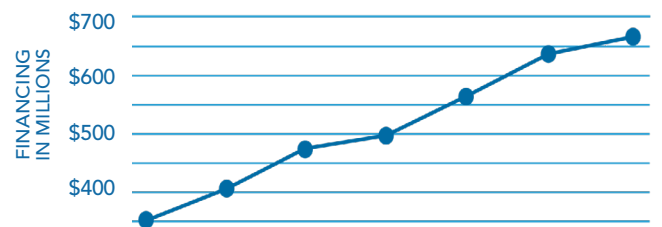


Employment Type

- Permanent (5,000)
- Temporary / Construction (21,191)

CUMULATIVE FINANCING

LOANS CLOSED ▶ 328 356 383 411 431 443 475



1996-2018 2019 2020 2021 2022 2023 12/31/2023

2.21 MILLION FLORIDIANS

RECEIVE ESSENTIAL SERVICES
EVERY YEAR



Type of Lending

- Food Access (1,170,824)
- Nonprofit Community Services (511,637)
- Commercial & Retail (320,857)
- Healthcare & Behavioral Health (127,242)
- Education & Youth (38,028)
- Housing (24,086)
- Homeless & Special Needs (16,914)

OUR CORE PURPOSE

FCLF exists to maximize opportunities for people and places outside of the economic mainstream.

OUR VISION

Opportunity and dignity exist for every person and community in Florida.

OUR MISSION

Our expertise and capital make projects successful and help organizations improve lives and communities.